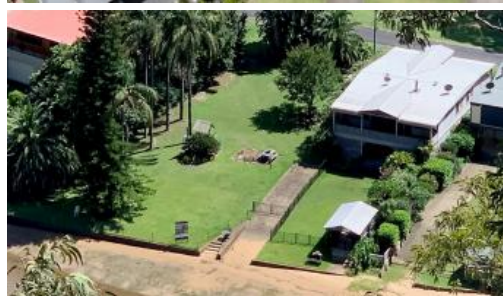


Sold

47 Walmsley Rd, Lower Macdonald



## Exclusive Walmsley Road Waterfront Vacant Land

Very rarely do we see a near level vacant block of waterfront land on Walmsley Road come to market. They simply don't exist!

Number 47 has been in the one ownership for nearly 25 years. This rare gem has been meticulously maintained as part of a larger compound and is now available as a separate parcel.

This near level 803sqm waterfront block has direct water access, spectacular views of the Macdonald River and beyond to the adjacent escarpment.

The property is ideal for a weekend escape, bring your van, pitch your tent or simply just sit back, relax and drop in a fishing line.

Our understanding is that building a permanently habitable dwelling on this property would be challenging due to flood

803 m2

<b>Price</b>	SOLD
<b>Property Type</b>	Residential
<b>Property ID</b>	72
<b>Land Area</b>	803 m2

### Agent Details

Trent Iverson - 0409 738 388

### Office Details

Vella Iverson Real Estate  
4384 Old Northern Rd  
Maroota, NSW, 2756 Australia  
02 4566 8383

**VELLAIVERSON**

level and floor heights. A shed and amenities could be an option but we advise you discuss this with Hawkesbury Council.

You are moments from the Hawkesbury River by boat and only 5 minutes from Wisemans Ferry. Sydney's CBD is only a leisurely 90 minute drive an even less to the Upper North Shore or The Hills District.

Do not miss this opportunity to secure a prime piece of exclusive waterfront land on Sydney's doorstep!

The above information provided has been furnished to us by the vendor/s. We have not verified whether or not that information is accurate and do not have any belief in one way or the other in its accuracy. We do not accept any responsibility to any person for its accuracy and do no more than pass it on. All interested parties should make and rely upon their own inquiries in order to determine whether or not this information is in fact accurate.